

# VERIFIED CASTION

# EMPOWER YOUR DISTRIBUTION NETWORK TO BE ON-TIME, IN-FULL, EVERY TIME

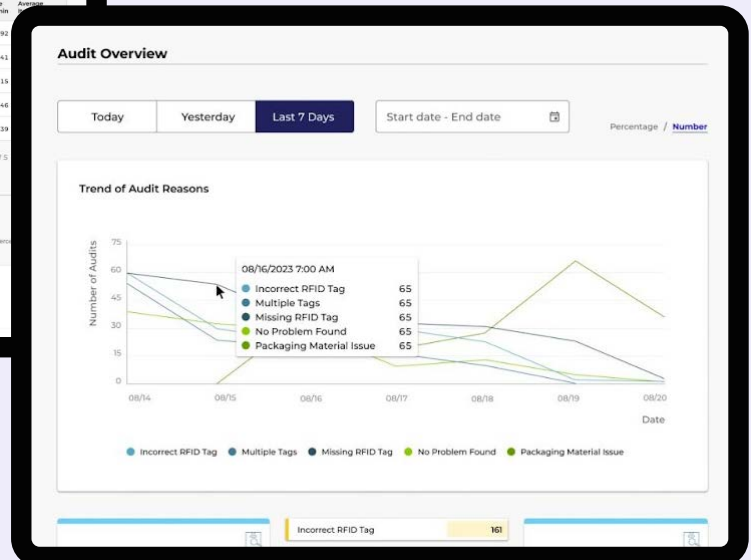
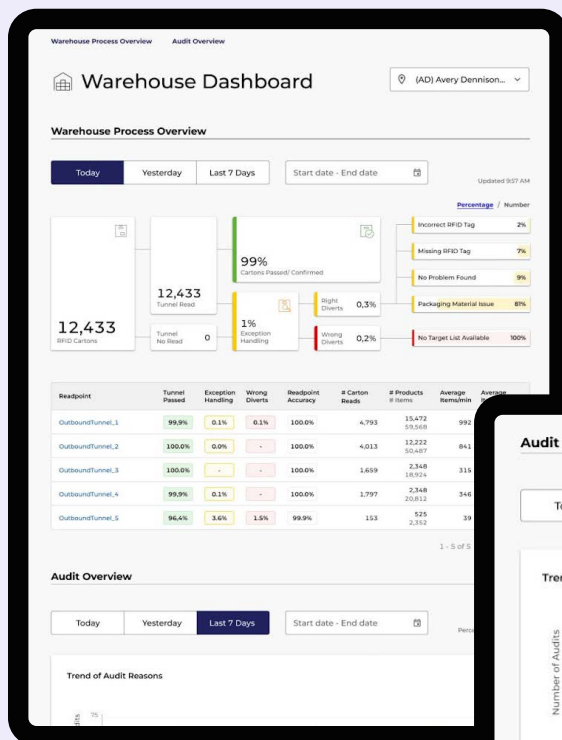
Case Verification by Avery Dennison delivers the highest level of shipping accuracy and tagging compliance across distribution centers (DCs) and warehouses through fully integrated, RFID-enabled operations.

Case Verification provides automated, item-level shipment verification without line of sight or manual touch: eliminates shipping errors, reduces labor costs and removes friction in your supply chain.

## Key benefits

- Boost shipping accuracy and RFID tagging compliance, with inbound / outbound verification and built-in exception handling
- Reduce chargebacks for incorrect shipments, with on-time in-full deliveries
- Eliminate disputes and manual claim management with standardized data interfaces and item-level data at your fingertip
- Fast and cost-efficient implementation and global deployment capabilities along with proven and scalable methodology

Easy-to-configure dashboard and reporting features to see your entire distribution network in a snapshot



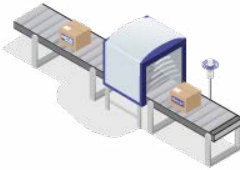
# ENSURE PEAK PERFORMANCE WITH OUR TURNKEY SOLUTION

If you are overwhelmed by overstocking, stockouts or claims and chargebacks — we've got you covered.

Our integrated solution covering RFID hardware, software, labels and professional services for implementation and deployment can help you get results fast.

With our RFID Tunnels, and RFID Workstations, we offer highly modular and flexible building blocks to enable any DC with RFID verification capabilities — no matter if it is a fully automated or partially manual facility.

## RFID Tunnel



## RFID Workstations



### You're just three steps away from more efficient operations

Enable item-level inventory visibility for each case, carton or container in real-time. This approach can help to increase accuracy and compliance, while reducing time spent on manual claim management.

#### Step 1

RFID outbound audit: Drive inventory accuracy and sales in retail. Eliminate charge-backs from wholesale partners, as well as manual claim management.

#### Step 2

RFID inbound audit: Enable supplier charge-backs. Increase inventory accuracy and efficiency in the DC.

#### Step 3

Enable additional processes with RFID: Increase efficiency and accuracy.

### Our proven implementation methodology — by DC



**Preparation:** Plan and prepare the visit, equipped with an initial solution draft



**Assessment:** Give a heads-up to DC team and perform on-site assessment



**Solution design:** Define hardware, software, and integration concept, and get solution sign-off



**Development and set-up plan:** Software customization and integrations



**Installation:** Hardware and software installation, training, and user acceptance tests









**DC go-live**

# HOW CAN WE HELP YOUR BUSINESS?

Avery Dennison connects the physical and digital to solve complex industry challenges. Case Verification is part of our solution portfolio and is natively integrated with other applications to enable additional use-cases and benefits in your supply chain. Reach out to one of our experts to understand how we can help your business.

## Key features of Avery Dennison's Case Verification solution, include:

-  Exceptional throughput with carefully tuned hardware and machine-learning (ML) algorithms for higher performance
-  Modular design — start small, scale big — from one readpoint to several DCs, inbound or outbound
-  Requires minimal changes to existing systems (WMS, ERP) and infrastructure
-  Works with all types of DC operations, whether manual, mechanized, or fully automated
-  Proven implementation methodology and worldwide support coverage
-  Enterprise grade IT security and support

## Our partners

Avery Dennison has an established ecosystem of partners which include building integrations, enabling smoother implementation with minimal disruption, and secure data exchange across systems. Some of our partners include:



And many more!

Schedule your demo today.

[atma.io](https://atma.io)

